



# ANNUAL IMPACT REPORT 2024



# WELCOME

Welcome to The Community Impact Initiative C.I.C.'s annual report for 2024.

This year, we supported more people than ever to improve their health and wellbeing, build their confidence and self-esteem, learn new skills, achieve qualifications, and make positive life improvements, through the regeneration of our local communities.

We want to say thank you to all of our partners and collaborators, as well as the communities who welcomed our projects and allowed us to be a part of their journeys.

Through this report, we invite you to join us in celebrating the stories and achievements that mark another year of progress toward our vision of a future where our communities flourish and prosper.

## CONTENTS

02

WELCOME & CONTENTS

03

FOREWORD

04

STATEMENT

05

MEET THE TEAM

06

OUR WORK

07

COMMUNITY IMPACT

08

ENVIRONMENTAL IMPACT

09

BUILDING RESILIENCE IN COMMUNITIES

12

SUSTAINING A LEGACY

15

WOMEN CONSTRUCT WALES

18

STRONG FOUNDATIONS SCOTLAND

20

CII HOMES

22

CII CONSTRUCTION

24

FINANCE AND FUNDING

27

ACHIEVEMENT AND AWARDS

28

LOOKING FORWARD

# FOREWORD

At the heart of every thriving community is the opportunity for its people to flourish and prosper. The Community Impact Initiative C.I.C embodies this belief by turning empty properties into vibrant spaces that inspire personal growth and social connection. This report highlights the profound transformation achieved through our work over the past year, showcasing the real, lasting difference it makes in people's lives.

Our work supports individuals from diverse backgrounds to improve their health and wellbeing, rebuild their confidence, and take tangible steps toward brighter futures. Through hands-on involvement in regenerating properties, participants gain invaluable skills, strengthen their self-esteem, and foster a sense of purpose. The personal stories within this report illustrate how these activities empower people to overcome challenges and embrace new opportunities.

Beyond personal growth, the impact of our work ripples across entire communities. By restoring empty spaces, we foster social inclusion and cohesion, creating community hubs that unite neighbours and strengthen bonds. Economically, these activities breathe life into local economies by unlocking the potential of under-utilised properties, creating jobs, and reducing social inequalities.

There are many highlights of the year, but to be named Social Enterprise of the Year at the Social Business Wales awards in October was a hugely proud moment for everyone connected with our organisation.

We are immensely proud of what we have accomplished together and remain committed to transforming lives and communities through our meaningful work.

Thank you for your continued support in making these changes possible.



TRYSTAN JONES  
CHIEF EXECUTIVE



# STATEMENT

I've had the privilege of working with The Community Impact Initiative C.I.C for the past four years, and I can genuinely say that each year has been more successful than the last. Over the last 12 months, we've seen exciting new partnerships emerge, including with R&M Williams, Tempo Time Credits, and Calan DVS.

The number of community members joining each project continues to grow, with referrals coming from organisations including JCP, The Wallich, Careers Wales, ITEC Training, Tydfil Training, and Maximus. We've also seen an increase in self-referrals through social media and our website.

Each participant we support brings a fresh perspective to the project. This year, we've noticed an increase in participants experiencing poor wellbeing from the impact of the cost-of-living crisis and domestic violence.

We are incredibly grateful to all our participants and staff for their ongoing dedication and support, and we look forward to continuing our work next year.



ABI LEWIS  
HEAD OF SERVICE DELIVERY



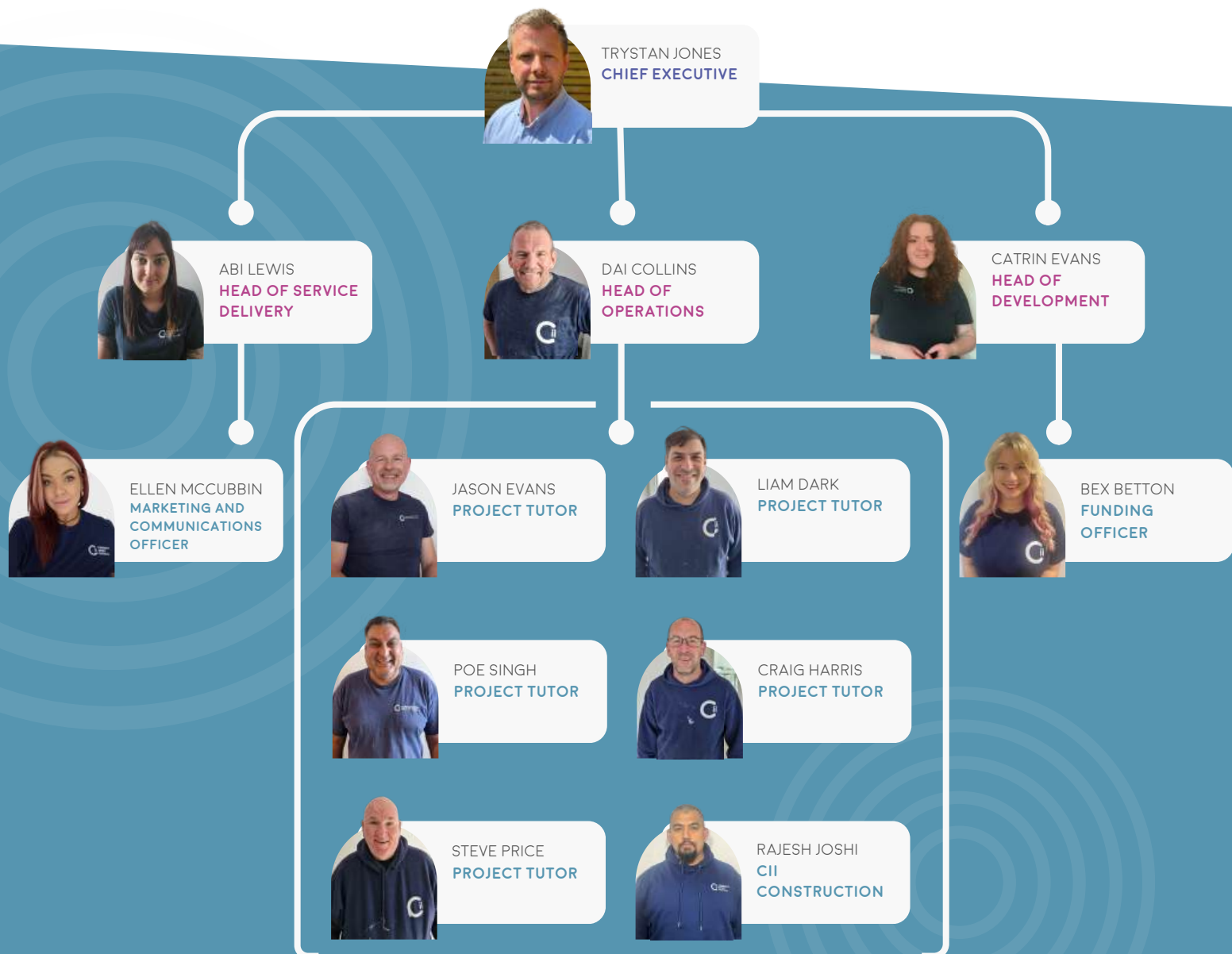
# MEET THE CII TEAM

During the year, the Community Impact Initiative C.I.C directly employed 12 dedicated staff members, many of whom have personal connections with our local communities and lived experience of the barriers they face.

All of our staff are committed to our community values and mission.

We were delighted to create 3 new roles in the organisation, welcoming Ellen, Marketing and Communications Officer; Bex, Funding Officer, and Steve, Project Tutor, all of whom have already made a significant impact to the organisation and our work.

## ORGANISATION STRUCTURE



# OUR WORK

## WHAT WE DO

We strive to achieve positive socio-economic change across our communities through our innovative property regeneration cycle;



1. We purchase long-term empty homes in communities affected by the housing crisis, high levels of poverty, unemployment, or social isolation.
2. With each property regeneration, community members are supported to learn new skills, improve their wellbeing, gain qualifications, and access new opportunities.
3. Throughout this stage, we work to ensure our projects have a sustained positive impact on the environment.
4. Once completed, our properties are either sold, with all profits reinvested into our projects, or used in partnership with support agencies to provide rental opportunities.

## OUR PROJECTS

Through our projects we aim to provide life changing opportunities to individuals and make a positive impact on our communities and our environment. Our projects include:



# OUR COMMUNITY IMPACT

IN 2024 **107** COMMUNITY MEMBERS JOINED OUR PROJECTS



**3 IN 5**

FELT SIGNIFICANTLY MORE POSITIVE IN THEMSELVES, THEIR LIFE AND THEIR FUTURE PROSPECTS

**68%**

PROGRESSED INTO WORK, EDUCATION OR TRAINING FOLLOWING A PROJECT

**62%**

FELT MORE CONNECTED TO OTHERS

**4 IN 5**

REPORTED IMPROVEMENT IN THEIR OVERALL WELLBEING

## DIVERSITY, EQUALITY AND INCLUSION

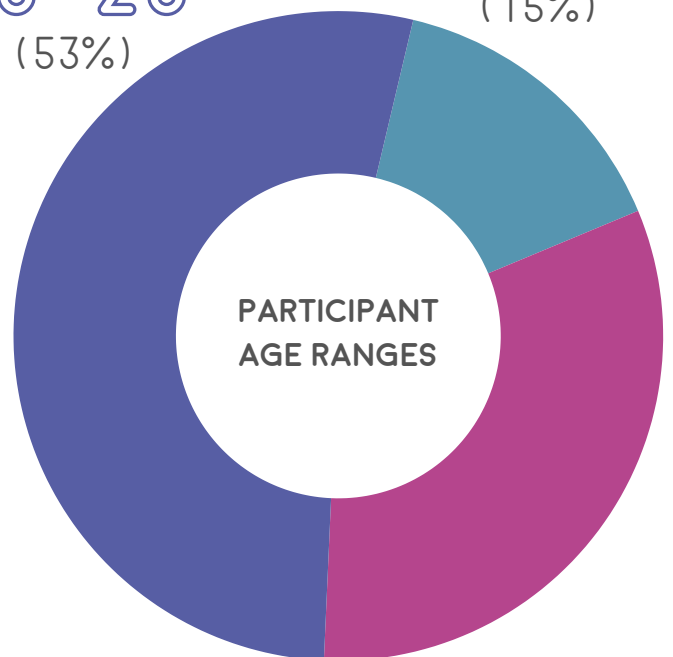
**26%**

HAD ADDITIONAL LEARNING NEEDS



**16-25**  
(53%)

**50+**  
(15%)



**36%**

IDENTIFIED AS FEMALE OR NON-BINARY



**6%**

WERE WELSH SPEAKERS



**26-50**  
(32%)

# OUR ENVIRONMENTAL IMPACT

We are committed to ensuring our activities have a positive environmental impact. Our projects are designed to have a minimal ecological footprint and are created to have a sustainable impact on the environment for years to come. Where possible, some of the environmental initiatives we have included are:

## RECYCLED MATERIALS

We use recycled materials to conserve natural resources. We aim to repurpose and reclaim materials that would otherwise go to landfill.

## REDUCED WASTE

We collect unused materials from local businesses that have been over-ordered or are at expiration risk. These materials are then used throughout our properties and saved from disposal.

## ENERGY-EFFICIENT INSTALLATIONS

Through our projects we use energy-efficient installations, including, high-quality insulation, double glazing, and L.E.D. lights. We have also made our first steps towards securing renewable energy systems.

## BIODIVERSE GARDENS

We transform the gardens at our properties into biodiverse havens for a range of wildlife. Our gardens are also designed to protect local plant species and produce fertile soil.

## TRANSPORT INCENTIVES

We purposely locate our projects near public transport to encourage its use and promote vehicle sharing to minimise road traffic.

**SUSTAINABILITY IS ENGRAINED INTO OUR COMPANY CULTURE AND VALUES. LEADING TO OUR WORK WITH CYNNAL CYMRU TO BECOME A NET-ZERO ORGANISATION.**





# BRiC

Building Resilience  
in Communities



FUNDED BY



Cronfa Gymunedol Fferm Wynt  
**PEN Y CYMOEDD**  
Wind Farm Community Fund CIC

# BUILDING RESILIENCE IN COMMUNITIES

Funded by the Pen y Cymoedd Wind Farm Community Fund, Building Resilience in Communities (BRiC) is an innovative skills development and community regeneration project. Through the regeneration of empty properties, BRiC empowers people to improve their wellbeing, build confidence, learn new skills, and create positive change in their communities.

This year marked the successful completion of our third and fourth BRiC projects, delivering incredible impact across the community.

## PROJECT AIMS

- Challenge our community members to take **positive action** and become responsible for their own life journeys.
- Inspire a sense of **community pride, resilience, and ownership** through its activities.
- Regenerate and invigorate** the local community by taking proactive and innovative steps to reduce empty property numbers.

I HAVE LEARNT A LOT SINCE BEING WITH CII. THANK YOU SO MUCH. THE TUTORS HAVE BEEN **MASSIVE INSPIRATIONS AND ROLE MODELS** TO ME.

Tyler, Participant

## BRIC IMPACT

DELIVERED IN MELINCOURT AND TREHERBERT

We received 117 referrals, 49 of which attended inductions and engaged with the projects. Many faced a range of challenges including, financial issues, poor health, and long-term unemployment.

I CANNOT TELL YOU THE IMPACT THE PROJECT HAS HAD ON LEWIS. HE HAS **GROWN IN CONFIDENCE. SELF LOVE AND MATURITY.**

Referral Partner

75%

felt more connected to their local community



82%

reported an improvement in their wellbeing since joining the project

59%

progressed into employment, education or training



# PARTICIPANT HIGHLIGHT

# LEWIS

Lewis joined BRiC as a pathway to tackling the high levels of anxiety he was experiencing, which at the time, affected his ability to carry out daily tasks.

During the 6 months Lewis spent on the project, he was able to work through his anxieties with our staff team, who supported him in building his confidence through meeting new people, learning new skills, and finding a sense of self-worth.



Upon the project's conclusion, Lewis' improved wellbeing gave him the confidence to achieve a range of personal and professional goals and establish the direction of his future. In recognition of this incredible commitment to positive change, Lewis was presented with the "Worker of the Year" award during his school's awards ceremony, attended by staff who supported Lewis at the Cii.

36 THE TUTORS ARE GREAT AND I ENJOY COMING IN.





# SUSTAINING A LEGACY



## FUNDED BY

Asedau Segur  
Camau Cynaliadwy Cymru

Dormant Assets  
Sustainable Steps Wales

Ddarperir gan  
CRONFA GYMUNEDOL  
LOTERI GENEDLAETHOL

Delivered by  
THE NATIONAL LOTTERY  
COMMUNITY FUND

# SUSTAINING A LEGACY

Funded by the National Lottery Community Fund – Sustainable Steps, this year saw the completion of our first Sustaining a Legacy (SaL) project, an innovative project that supports community members to engage in climate action. Through regenerating empty properties, the project demonstrates how individual and collective actions can have a positive environmental impact.

## PROJECT AIMS

- Support the community to **reduce energy consumption, improve energy efficiency** and gain the skills needed for green careers.
- Create **positive, lasting connections** between participants and the wider community.
- Return an empty home to the property market, **reducing the carbon footprint of the property** and providing a solution to empty property numbers.

I FEEL LIKE I'VE FINALLY FOUND A WAY OF LEARNING THAT REALLY SUITS ME AND HAS HELPED ME FOCUS ON WHAT I WANT TO DO.

Ryan, Participant

## SAL IMPACT DELIVERED IN SWANSEA

We received 87 referrals, 37 of which attended inductions and engaged with the projects. Many participants on the project were aged 16-25 and were experiencing long-term mental health issues, some of which related to substance abuse.

I AM VERY GRATEFUL FOR THE OPPORTUNITY TO BE HERE. LEARN ABOUT ECO-FRIENDLY CONSTRUCTION AND HELP FIND NEW JOBS.

Mauricio, Participant

75%

had a better understanding of energy saving techniques by the end of the project



95%

reported an improvement in their wellbeing since joining the project



71%

progressed into employment, education or training



## PARTICIPANT HIGHLIGHT

# JOSE

Jose joined the project as an asylum seeker from Honduras, wanting to get back into work. While he waited to obtain his right to stay, he took part in SaL as an opportunity to keep himself busy during the stressful time.

During the project, we helped Jose connect with local organisations that specialise in supporting asylum seekers. Throughout his time with the Cii, Jose proved to be a skilled and thoughtful participant, who also spent most of his free time volunteering for other local causes.

Jose achieved 2 qualifications whilst on the project and committed to enrolling in further training to help with his employability.



I AM GRATEFUL FOR THE CHANCE  
TO JOIN THE PROJECT AND TO HAVE  
A REASON TO GET BACK INTO WORK



WOMEN  
CONSTRUCT  
WALES



FUNDED BY



# WOMEN CONSTRUCT WALES

Funded by the National Lottery Community Fund, Women Construct Wales supports women to improve their health and wellbeing, build confidence, learn new skills, and make positive changes through the regeneration of empty properties in their community.

## PROJECT AIMS

- Create an environment where **women can connect** and learn together.
- Support women to **become confident** in making their own home improvements.
- Show local women that a **career in construction** is an option for them.

## WCW IMPACT DELIVERED IN NEATH PORT TALBOT

We received 71 referrals, 30 of which attended inductions and engaged with the project. Some participants shared that they felt isolated and had lost their confidence in meeting new people. It was clear that participants felt that this, along with a lack of skills and periods of inactivity due to care responsibilities meant they had limited options to progress to employment, education or training.

A high proportion of women on the project were overcoming experiences of domestic violence. Our staff received special training to support these participants alongside expert DV services.

THE WORK I HAVE DONE  
AND THE WORK  
EXPERIENCE I HAVE  
GAINED HAS BEEN  
**INVALUABLE TOWARDS  
HELPING ME FIND AN  
APPRENTICESHIP.**

Emily, Participant

IT PROVIDES THE  
OPPORTUNITY TO **GROW  
YOUR SELF-ESTEEM AND  
CONFIDENCE** IN  
SOCIALISING WITH OTHER  
WOMEN OF ALL AGES  
AND EXPERIENCES.

Bethan, Participant

70%

felt more connected to  
their local community



100%

improved or maintained  
level of wellbeing since  
joining the project

35%

progressed into  
employment, education or  
training





# PARTICIPANT HIGHLIGHT

# CHARLOTTE

Charlotte joined the project after relocating to the area following an experience of domestic abuse. She had little confidence and felt she was not the best version of herself.

During the project, Charlotte built an excellent relationship with the tutors and other participants. Her self-esteem improved significantly, and with a strong circle of support around her, she felt motivated to start planning to move forward with her life.

Charlotte achieved 2 qualifications on the project and secured part-time work at a local coffee shop.



I'M GROWING EACH DAY AND WILL  
CONTINUE TO DO SO. I STILL HAVE MY  
BAD DAYS, BUT THE GOOD DAYS  
OUTWEIGH THESE NOW.'



An aerial photograph of a coastal town, likely Aberdeen, Scotland. The foreground is dominated by lush green trees. The middle ground shows a dense urban area with various buildings, including a prominent red and white high-rise. A long, curved bridge spans across a wide bay in the background. The sky is filled with large, dramatic clouds, with a mix of blue and golden light, suggesting a sunset or sunrise.

STRONG FOUNDATIONS  
SCOTLAND  
PHASE 1 (JUNE 2024 - JUNE 2025)

# STRONG FOUNDATIONS SCOTLAND

## PHASE 1 (JUNE 2024 - JUNE 2025)

Strong Foundations Scotland (SFS) spearheads our strategic aim to expand our support geographically, allowing us to help people in communities across the UK. For phase 1 of SFS, our Head of Development has been laying the groundwork needed to launch community regeneration projects in Dundee, Scotland. Phase 1 of this project is part-funded by The Scottish Empty Homes Partnership.

### BACKGROUND

Our research, engagement and consultation found that communities in Dundee experience similar challenges to those we support in Wales. According to the Scottish Index of Multiple Deprivation, Dundee ranks 5th most deprived out of 32 Scottish local authorities and host over 1,000 empty homes.

### PROJECT AIMS

Support the community in Dundee to build a strong foundation for their wellbeing, gain skills, achieve qualifications and find a future to look forward to.

Bring long-term empty homes back into use as housing for vulnerable people.

Share our learning and encourage others in Scotland to use the regeneration of empty homes to support their communities.

### PROGRESS

Over the past seven months, we have made significant progress towards our overall aim of an empty homes' regeneration project in Scotland:

CONSULTED WITH OVER **30 ORGANISATIONS** REGARDING DUNDEE'S STRENGTHS AND CHALLENGES.

**DEVELOPED PARTNERSHIPS** WITH KEY ORGANISATIONS IN DUNDEE.

ATTENDED SEVERAL COMMUNITY EVENTS IN DUNDEE. CONNECTING WITH PEOPLE WHO MIGHT **BENEFIT FROM OUR SUPPORT.**

MADE PROGRESS ON A **MATCH FUNDING BID** BETWEEN SEVERAL LOCAL AND NATIONAL TRUSTS.



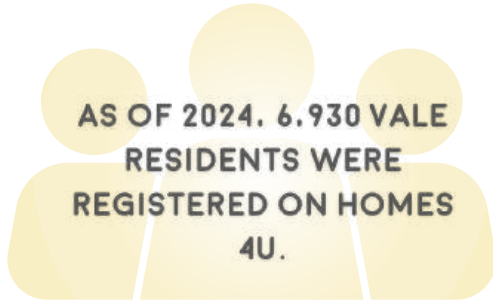
CII HOMES  
BARRY

# CII HOMES - BARRY

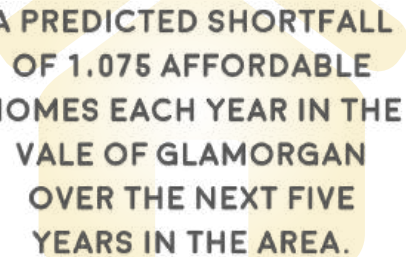
Cii Homes was first established in Barry as a direct response to this urgent need, providing high quality housing in the Vale of Glamorgan amidst the current crisis in the county and UK-wide:



**THE VALE WAS TOP 3 OF THE 17 LOCAL AUTHORITIES THAT SAW A RISE OF HOUSEHOLDS IN TEMPORARY ACCOMMODATION.**



**AS OF 2024, 6.930 VALE RESIDENTS WERE REGISTERED ON HOMES 4U.**



**A PREDICTED SHORTFALL OF 1.075 AFFORDABLE HOMES EACH YEAR IN THE VALE OF GLAMORGAN OVER THE NEXT FIVE YEARS IN THE AREA.**

By providing a safe and comfortable living environment, Cii Homes supports the community by providing a housing solution for local authorities, and to individuals facing housing insecurity. By doing so, it helps ensure more people have access to stable accommodation in a challenging housing landscape.

**10** people were housed in 2024 through the Cii Homes project, offering them a safe and stable place to live.

We believe that everyone deserves to live in a comfortable space, so as part of the project, we not only provide properties but also ensure they are well-maintained. We carry out regular maintenance checks and complete necessary work quickly, so residents always have a safe, comfortable place to call home.





# CONSTRUCTION

Building Stronger Communities



# CII CONSTRUCTION

Cii Construction is the trading subsidiary of the Community Impact Initiative C.I.C group. Every penny we make through Cii Construction is reinvested into our community regeneration activities.

Cii Construction was primarily established to provide a work placement and employment pathway for our participants. In doing so, this allows us to expand our income base and geographical footprint by offering a professional, and not-for-profit, trade option for customers.



## CII CONSTRUCTION AND THE WALLICH

This year, Cii Construction partnered with The Wallich, a registered charity providing outreach, accommodation, support, and learning opportunities for people affected by homelessness in Wales.

The Wallich required maintenance services for their void properties with a reactive turnaround to reduce the waiting times to house people in need of accommodation.

After a successful trial period, the partnership will be expanding in 2025 and will include the hiring of a new dedicated member of staff to manage the partnership.



# FINANCE AND FUNDING

2024 has been a year of company growth across The Community Impact Initiative C.I.C and funding has been no different. In May, we recruited our new funding officer, Bex, a talented bid writer and fundraiser.

Thanks to the efforts of Bex, with support from the rest of the team, we were able to achieve our funding targets.

I want to personally say thank you to all our funders this year. We deeply appreciate your ongoing support.



CATRIN EVANS  
HEAD OF DEVELOPMENT





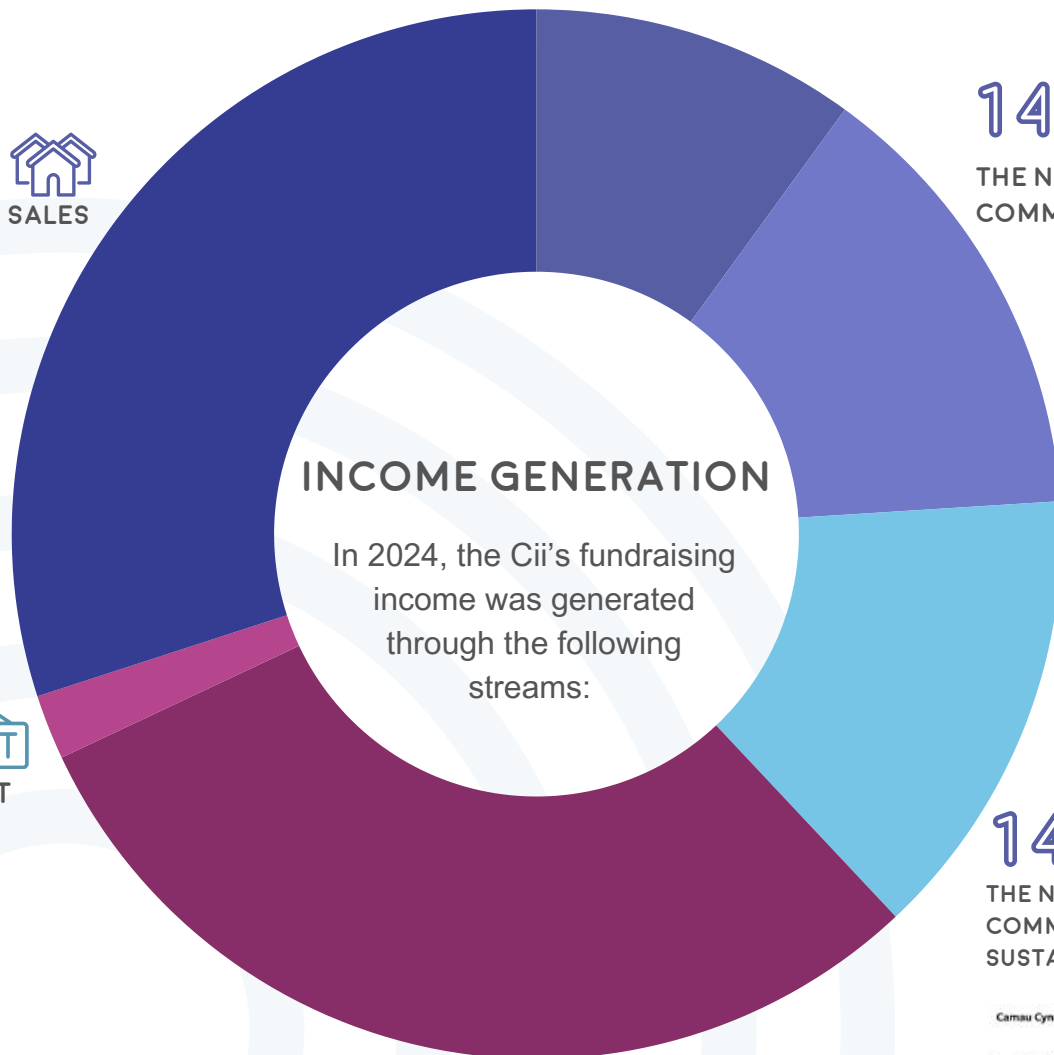
# FINANCIAL REPORT

10%   
PEN Y CYMOEDD WIND  
FARM COMMUNITY FUND

30%   
PROPERTY SALES

14%   
THE NATIONAL LOTTERY  
COMMUNITY FUND

2%   
SOCIAL RENT



## INCOME GENERATION

In 2024, the Cii's fundraising income was generated through the following streams:

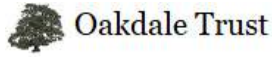
14%  
THE NATIONAL LOTTERY  
COMMUNITY FUND –  
SUSTAINABLE STEPS

Awdardd Segur  
Carmar Cynaliadwy Cymru | Ddiwydiwr i'w  
Cronfa Gymunedol  
Loteri Genedlaethol  
Delivered by  
THE NATIONAL LOTTERY  
COMMUNITY FUND

30%   
TRUSTS AND  
FOUNDATIONS

We operate best practices as a financially responsible and accountable organisation. As stated in our Financial Policy, we:

- ▶ Have a detailed budget prepared and approved annually by the Management Committee.
- ▶ Record all transactions and maintain all relevant financial records.
- ▶ Arrange an appropriate examination of the accounts and financial management systems with an independent body.
- ▶ Require the signature of two Management Committee Members to make financial withdrawals.



We are extremely grateful for the support of our funders, which has enabled us to deliver impactful community regeneration projects this year. Their support has enabled us to deliver our work to communities sustainably and plan for an ambitious future.

The support from our partners plays an equally crucial role in enabling us to do what we do. Their trust in our services and willingness to recommend us to others, expands our reach, allows us to grow and, most importantly, allows us to help our participants.

To our funders and partners, we would like to say...

# THANK YOU



# ACHIEVEMENTS AND AWARDS

This year, our innovative approach to skill development and community regeneration has resulted in national recognition.

We were incredibly proud to be named the winners of the 2024 Social Business Wales 'Social Enterprise of the Year' award! This recognition is a testament to the dedication of our team, participants, and supporters who make it all possible

We were also pleased to be shortlisted for the same category at the Social Enterprise UK Awards, standing alongside other inspiring organisations making a difference UK wide.

In addition, we were honoured to receive the bronze 'Impact in the Community' award at the Mental Health and Wellbeing Wales Awards 2024, celebrating the impact of our projects in supporting individuals and communities.

We also had a few TV appearances! We featured in television programmes, including BBC One Show, ITV Wales News at 6 and filmed for Homes Under the Hammer, which followed our projects at various stages.



# LOOKING FORWARD

During 2024 we released our new 5-year Strategy, including the following strategic aims and objectives:

SCALE OUR  
COMMUNITY  
OFFERING IN  
WALES

EXPAND OUR  
GEOGRAPHIC  
REACH

PROVIDE  
FURTHER  
HOUSING  
OPTIONS

DIVERSIFY  
OUR INCOME

# THANK YOU

We would like to thank our staff, partners, and communities for their dedication and support over the past year.

It would have been impossible to provide the impactful work we've delivered this year without the contribution of our stakeholders.

We look forward to developing our work further over 2025, as we strive towards achieving our vision for the people and communities we work with.



